



# GAT MONTHLY MEMBERSHIP PROGRESS REPORT

Results as of: 1/31/2023

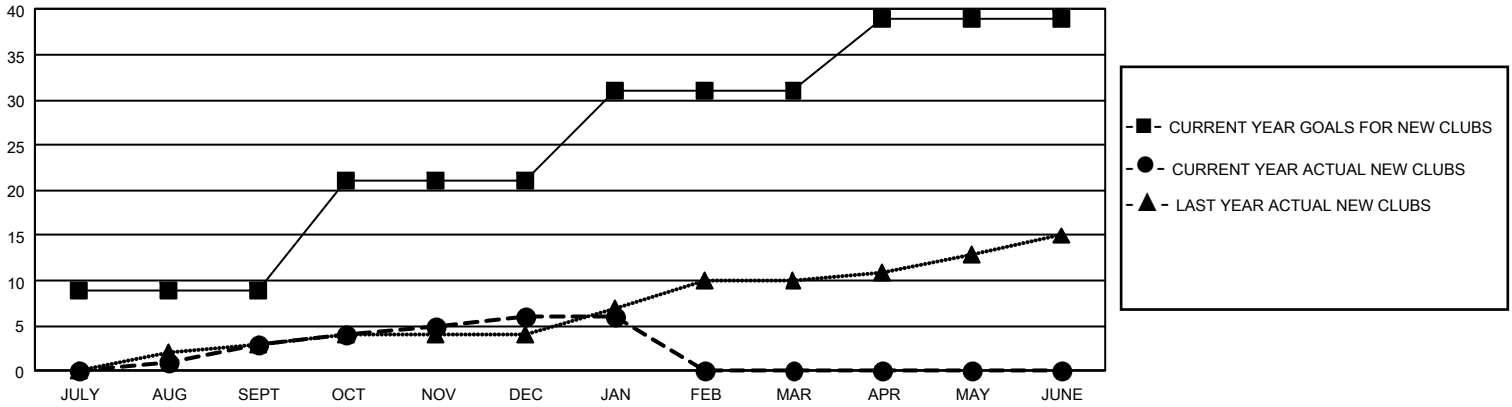
## GMT Constitutional Area 1, Group M

REPORT DOES NOT INCLUDE CLUBS IN UNDISTRICTED AREAS.

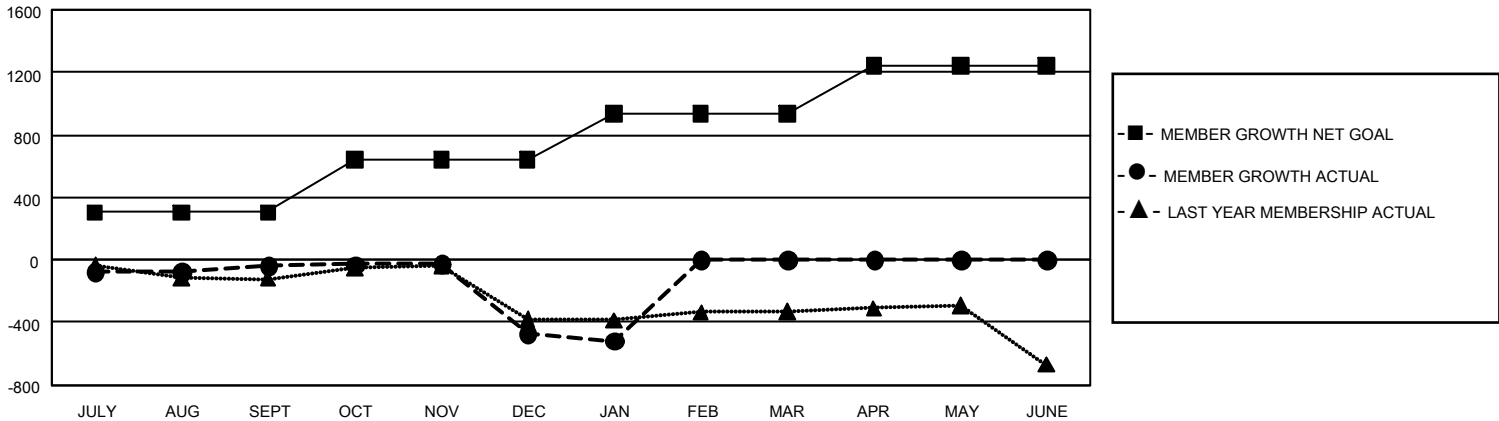
Clubs			
RESULTS FOR 2022-2023			
QUARTER	NEW CLUB GOAL	NEW CLUBS	DROPPED CLUBS
JULY/AUG/SEPT	27	3	7
OCT/NOV/DEC	36	3	18
JAN/FEB/MAR	30	0	5
APR/MAY/JUNE	24	0	0

Members			
RESULTS FOR 2022-2023			
QUARTER	MEMBER GROWTH NET GOAL	MEMBER GROWTH ACTUAL	DROPPED MEMBERS ACTUAL (including transfers)
JULY/AUG/SEPT	306	618	561
OCT/NOV/DEC	335	550	939
JAN/FEB/MAR	292	223	231
APR/MAY/JUNE	307	0	0

GOALS AND ACTUAL NEW CLUBS CUMULATIVE



GOALS AND ACTUAL MEMBERS CUMULATIVE



DROPPED CLUBS: 30	324 CLUBS OF 792 ADDED 1 OR MORE NEW MEMBERS	<u>GENDER DISTRIBUTION</u>	
<u>DROPPED MEMBERS</u>		MALE	10,144 (60.90%)
DECEASED	186	FEMALE	6,509 (39.07%)
CLUB CANCELLED	214	NON BINARY	1 (0.01%)
OTHER	1,331	PREFER NOT TO ANSWER	4 (0.02%)
TOTAL	1,731	TOTAL FAMILY UNIT MEMBERS	3,568
	<a href="#">CLICK HERE FOR CUMULATIVE MEMBERSHIP DATA</a>	FAMILY MEMBERS PAYING HALF DUES	1,836